

Sup. Sign.....

Examiner's Sign.....



V & C Patel English School
Assessment – II

Date: 18-09-2017

Subject: Social Studies

Name:.....

Total Marks: 50

Std.: III

Time: 1 hr & 30 Mins

Roll No:.....

Q-1 Fill in the blanks.

(5)

- 1) We must plant more to trees to get fresh
- 2) Plants need water to make
- 3) We Must water before drinking.
- 4) Dirty or polluted air is bad for
- 5) The Plateau occupies the largest part of India.
- 6) The great Forms the northern boundary of our country.
- 7) The Prime Minister's office is in the
- 8) Mumbai is the capital of State.
- 9) Delhi Can be Called
- 10) is the new name of Bombay.

Q-2 Tick the correct answer.

(5)

- 1) Earlier Delhi was known as
 - a) India
 - b) Indrapuri
 - c) Indraprastha
 - d) Indirapuri
- 2) The Parliament has houses.
 - a) 1
 - b) 2
 - c) 3
 - d) 4
- 3) is an important place near the Mumbai coast.
 - a) Bombay Height
 - b) Bombay hero
 - c) Bombay high
 - d) Bombay high court

4) is one of the famous beach of Mumbai.

a) Chapaty

c) Chopati

b) Chotali

d) Chowpatty

5) Our Country has beautiful

a) Mountains

c) Machines

b) Malls

d) Mercury

6) The rivers Ganga and Yamuna forms the

a) Great plans

c) Great pens

b) Great peas

d) Great Plains

7) What pollutes the air?

a) Smoke from factories

c) Smoke from Lamp

b) Smoke from Agarbatti

d) None of the above

8) In air we need gas to breathe in

a) Oxidant

c) Anti Oxidant

b) Oxygen

d) Anti Oxygen

9) Villages get water from

a) Walls

c) Walks

b) Wells

d) Walker

10) cycle is an important process to get rain.

a) Water

c) Bicycle

b) Motor

d) Tricycle

Q-3 Write T for true and F for false statement. Rewrite the wrong sentences .(4.5)

1) We should throw the garbage in covered bins. ()

2) We should pour the water to the plants in noon time. ()

3) Nilgiri hills are in south India ()

4) Essel world is located in Delhi. ()

5) Foreign offices are called Embassies or High Commissions. ()

Write correct sentences here.

- 1)
- 2)
- 3)

Q-4 Match the columns.

(2.5)

"A"

"B"

- | | | |
|---------------------|---|--------------------|
| 1) Climate of Delhi | - | a) Mumbai |
| 2) City of Dreams | - | b) Desert |
| 3) Sand area | - | c) Extreme |
| 4) Chlorine | - | d) Harmful gas |
| 5) Carbon dioxide | - | e) To filter water |
| | | f) Delhi |

1 - () 2 - () 3 - () 4 - () 5 - ()

Q-5 Draw a Diagram of Water cycle.

(3)

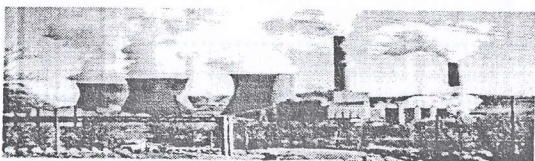
Q-8 (A) Answer the following questions :

1) How does the air become polluted?

2) How do we purify water at home?

Q-6 Name the picture and write one line about it .

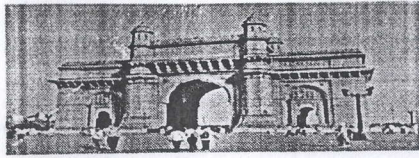
(6)



1)

.....
.....

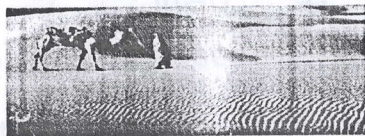
2)



3)



4)



Q-7 (A) Explain the terms :

(4)

1) Humid :

.....
.....

2) Heritage :

.....
.....

3) Island :

.....
.....

4) Water Vapour:

.....
.....

Q-7 (B) Write the answer in one line .

(5)

1) Who cleans the air for us ?

.....
.....

2) What is hydroelectricity ?

.....
.....

3) Which is the highest peak in the world ?

.....
.....

4) By whom the observatory was built at Jantar Mantar ?

.....
.....

5) Which is important festival of Mumbai ?

.....
.....

Q-8 (A) Answer the following questions :

(10)

1) How does the air become polluted ?

.....
.....
.....
.....

2) How do we purify water at home ?

.....
.....
.....
.....

3) List the physical divisions of India ?

.....

.....

.....

.....

4) List any four places of tourist interest in Delhi.

.....

.....

.....

.....

5) Write four lines about Mumbai.

.....

.....

.....

.....

Q-8 (B) Recently there are many issues such as Air and Water pollution with ENVIRONMENT , how will you help or contribute to SAVE THE ENVIRONMENT?, Write your views.

(2)

.....

.....

.....

.....

Q-9 Read the statements, identify the state or place and locate it in a map. (3)

1) I am the capital of country.

2) I am business and entertainment capital of India.

3) The place where Eastern and Western Coastal Plain meets.