



V & C Patel English School  
Yearly Examination

Std: VII  
Subject: Science

Max.Marks: 80  
Date:10/3/2018  
Time: 3 hrs

**General Instructions:**

Section A Q. No. 1 and 2 carry 1 mark each  
Section B Q.No. 3 to 11 carry 2 marks each  
Section C Q.No. 12 to 21 carry 3 marks each  
Section D Q.No. 22 to 27 carry 5 marks each

**SECTION A**

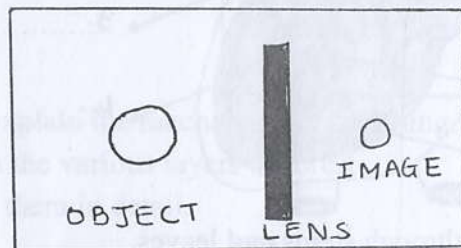
(1x2=02)

- Q1) Name one factor that increases the rate of rusting.  
Q2) What can be the speed of a violent Tornado ?

**SECTION B**

(2x09=18)

- Q3) There is nothing that goes waste in the Forests. Give reason.  
Q 4) A cheetah runs a distance of 200 m in 10 seconds. Find the speed of Cheetah in m/s and km/hr.  
Q5) (a) Define migration.  
(b) Enlist the adaptations of a penguin.  
Q6) Identify the lens. Mention any two uses of the identified lens.

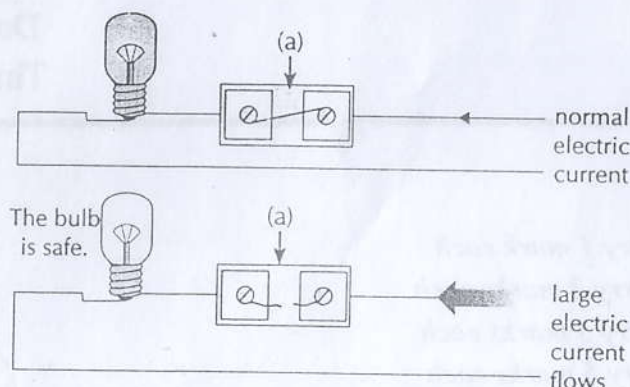


- Q7) Draw symbols for the following components  
a) Bulb      b) battery      c) switch in off position      d) electric cell  
Q8) How will you say that tearing of paper and burning of paper are two different types of changes  
Q9) Mention the precautions to be taken if you stay in a cyclone hit area.  
Q10) Differentiate between A and C horizons of soil.  
Q11) Draw and label excretory system in humans.

## SECTION C

(3x10=30)

Q12) Look at the following picture and answer the following questions :

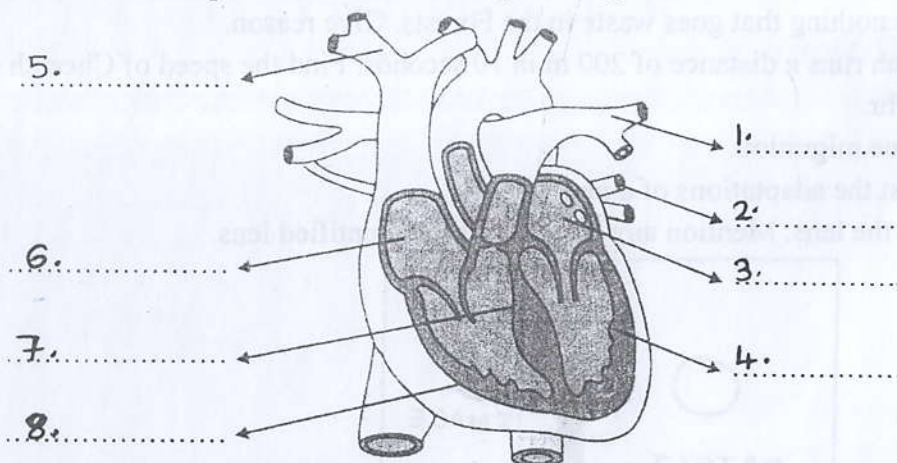


1. Identify the device shown in the given picture.
2. Why is the device used in the circuit.
3. What does MCB stand for ?

Q13) When magnesium ribbon is burnt in air , compound X is formed , which when mixed in water forms compound Y . Litmus test is performed with Y.

- (a) Which type of change is observed in the above experiment .
- (b) Name the compound X and Y formed in the experimeny.
- (c) State the effect of litmus on compound Y.

Q14) Lable the different parts of a heart in the given diagram.



Q15) Describe vegetative propagation through stems and leaves.

Q16) After a hectic day , Ashima's mother returns home. Seeing her mother tired and yawning frequently , Ashima asked her mother to sit and switches the fan on. Then she gets a glass of water for her and sits besides her.

1. Why does Ashima do so much and so quickly for her mother?
2. Why was her mother yawning ?
3. What does your body do by yawning?

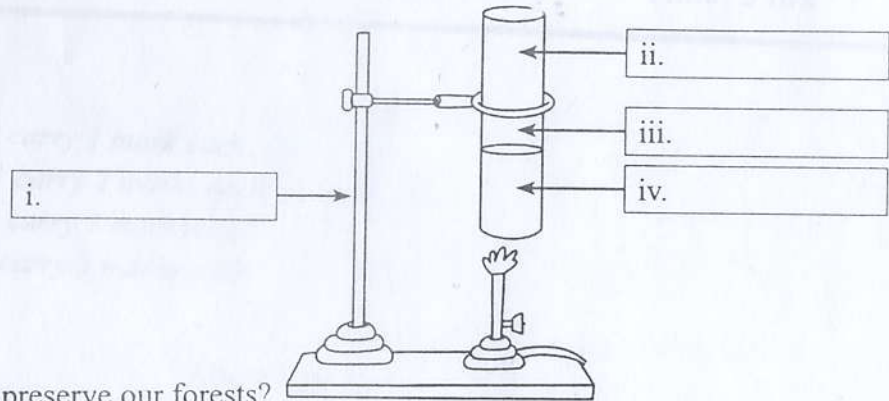
Q17) Give one word for the following :

1. Record distance travelled by the vehicle \_\_\_\_\_.
2. Decomposed organic matter \_\_\_\_\_.
3. It is the exact copy of the object , as reflected from the mirror \_\_\_\_\_.

- Q18) (a) What is pollination ?  
 (b) Mention its various types ?  
 (c) How does fertilisation take place in plants ?

OR

- Q18) Write a brief note on components of blood .  
 Q19) Label the given apparatus appropriately. What is the objective of this experiment?



- Q20) Why should we preserve our forests?  
 Q21) How can we create an electromagnet. Suggest some method.

### SECTION D

(5x06=30)

- Q22) (a) Complete the following data:

Inhaled air	Exhaled air
..... % oxygen	16.4% oxygen
0.04% carbon dioxide	.....% carbon dioxide

- (b) Briefly explain the mechanism of breathing.  
 Q23) (a) Mention the various layers of forest.  
 (b) Explain them in detail.

OR

- Q23) (a) What is seed dispersal?  
 (b) Write a short note on seed dispersal.  
 Q24) Explain the formation of a cyclone with the help of a well labelled diagram.  
 Q25) (a) What are the various effects of electric current?  
 (b) Explain them with the help of suitable examples.  
 Q26) Explain in detail the circulation of blood in heart .  
 Q27) (a) Define soil percolation .  
 (b) Suggest an activity to find out percolation rate of water in soil with its formula.

GOOD LUCK